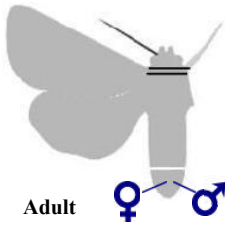


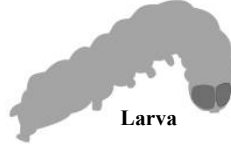
A Rough Guide to Morphology - *Index*



Adult



Pupa



Larva

👁 [Head](#)

👁 [Body](#)

👁 [Wings](#)

👁 [Genitalia: male](#)

👁 [Genitalia: female](#)

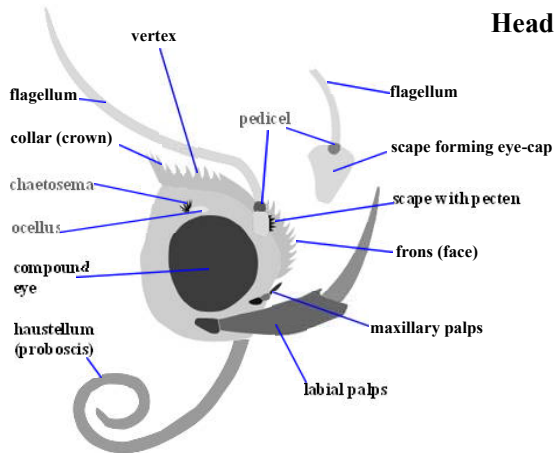
👁 [Pupa](#)

👁 [Larva](#)

👁 [Glossary](#)

Useful term or feature missing? Tell me and we'll include it in updates.

Head



Antennae = formed of scape, pedicel and flagellum

Chaetosema = a group of sensory hairs near the ocellus

Collar (crown) = scales at the rear part of the head

Compound eye = these may be 'clean' or have a scattering of hairs or lashes

Crown = collar

Flagellum = third part of the antennae and may be simple or be clothed in hair-like scales

Frons = front part of the head (face)

Haustellum (proboscis) = 'tongue', may be short, long, naked or clothed with scales

Labial palps = organs arising from just below the compound eye, usually with three segments and clothed with scales. Together with the maxillary palps, their layout and build can give clues to family identification

Maxillary palps = organs arising from just in front of the labial palps, sometimes conspicuous, sometimes apparently absent, usually clothed with scales and sometimes folded in the more primitive families, partially obscuring the eye. Together with the labial palps, their layout and build can give clues to family identification

Ocellus = a simple eye, sensitive to light levels.

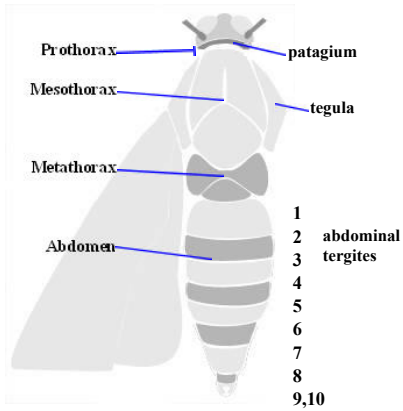
Pedicel = second part of the antennae, between the scape and flagellum

Proboscis = haustellum

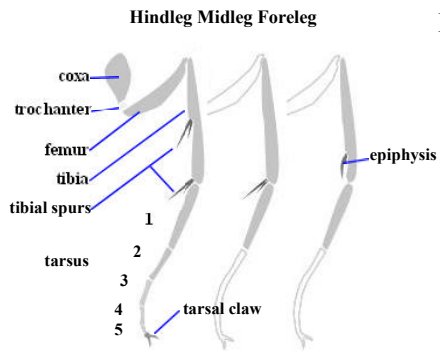
Scape = first part of the antennae, which may be simple, have a row of bristles forming a pecten, or be expanded to form an eyecap

Vertex = area between antennae and collar

Body



Legs

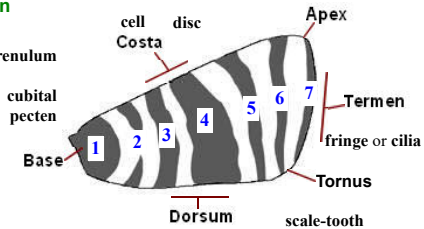


Wings

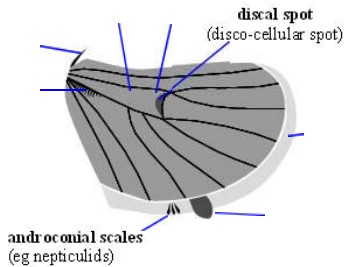
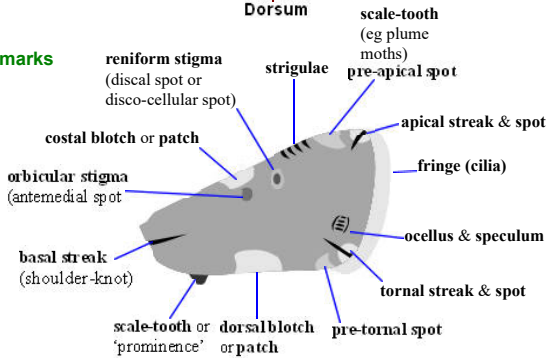
Positions of fascia (bands), lines and areas

Hindwing features & venation

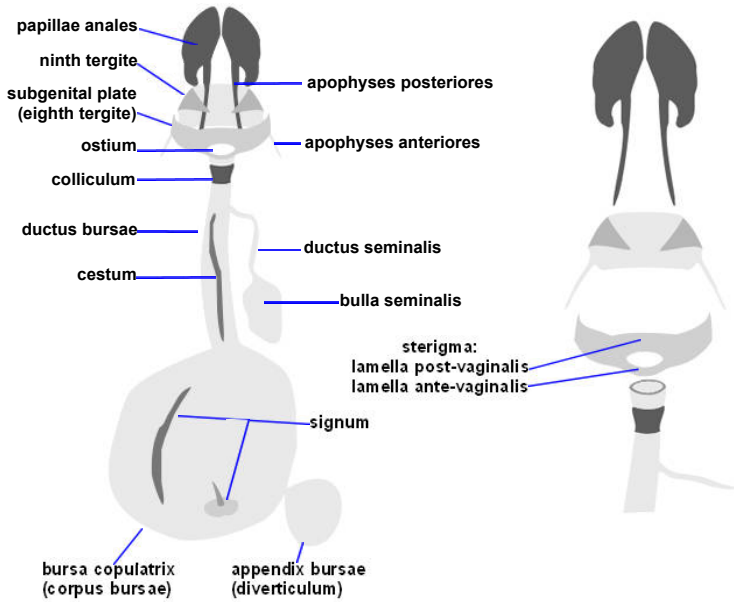
- 1/ basal patch frenulum
- 2/ sub-basal
- 3/ antemedian
- 4/ median
- 5/ post-median
- 6/ Sub-terminal
- 7/ terminal



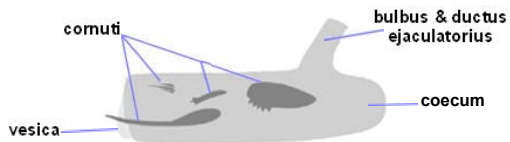
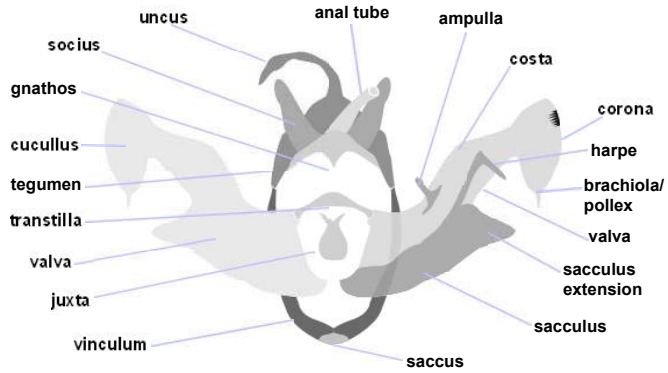
Spots, blotches and marks



Genitalia - female

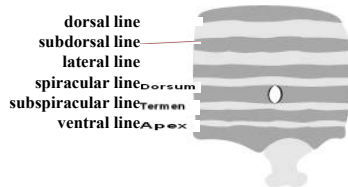
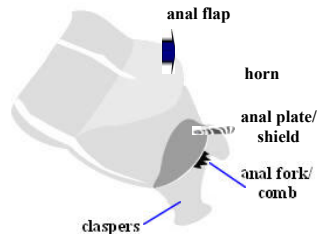
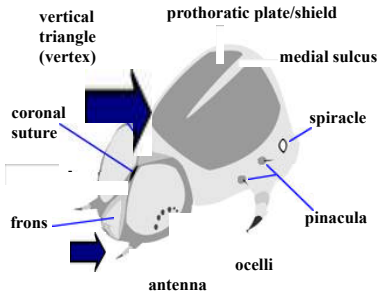
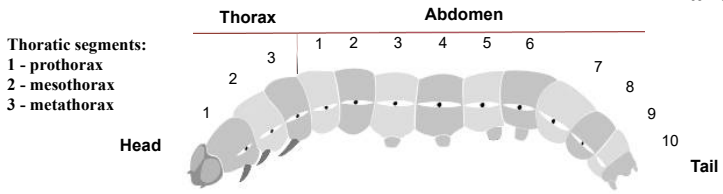


Genitalia - male

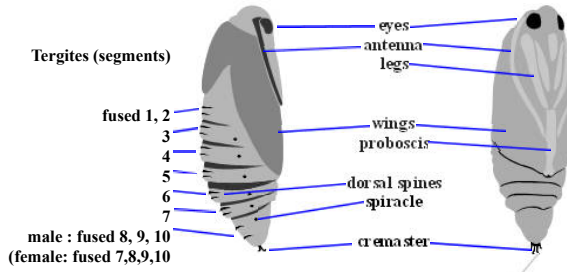


Aedeagus

Larva



Pupa



Sexing

